

Fisheries Bureau

0 320 640 1,280 1,920 2,560 Feet

# Prairie Rose Lake

## Shellby County

Contour Interval is three feet

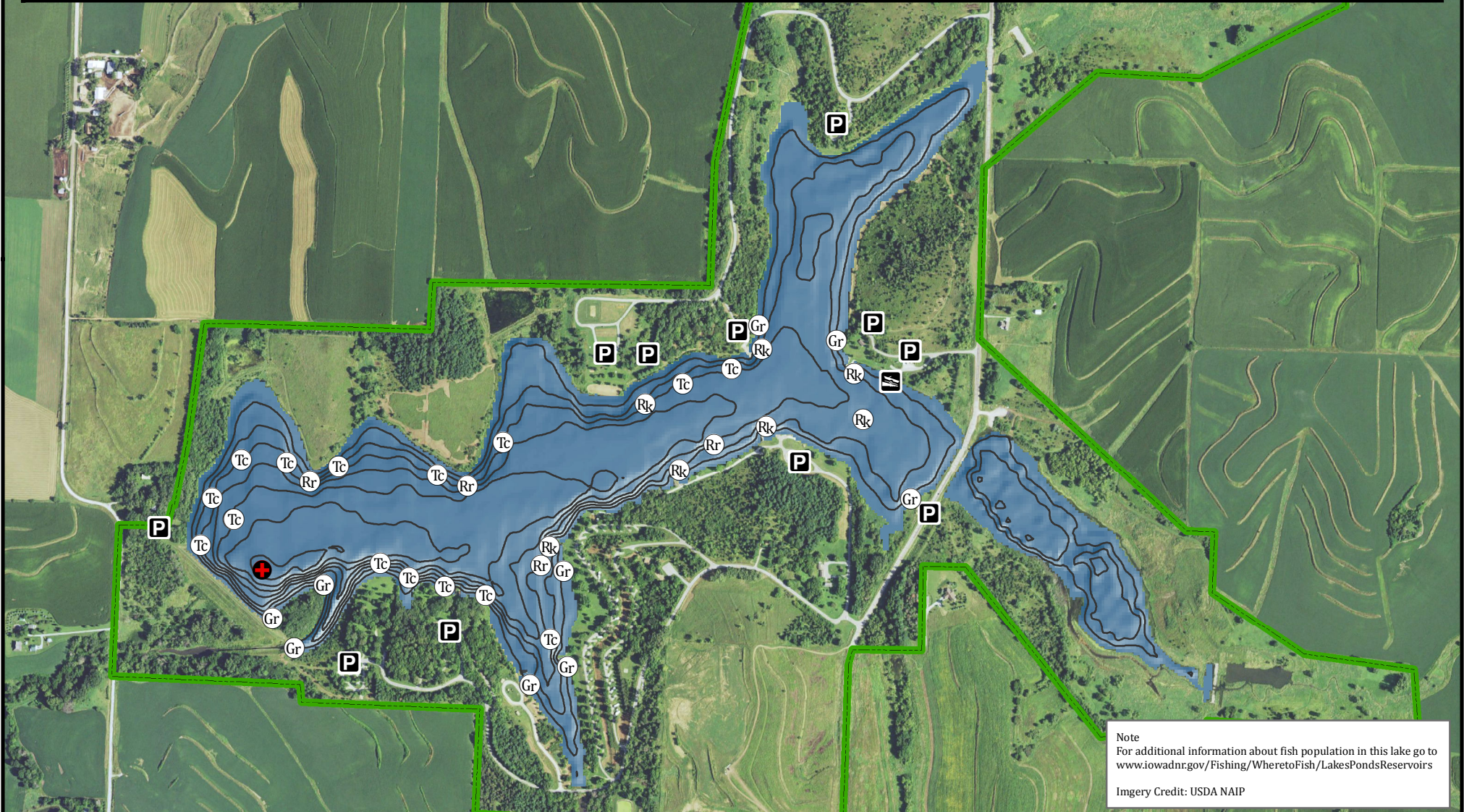
Maximum Depth - 55 ft  
Mean Depth - 24 ft  
Area - 401 acres

- Maximum Depth
- Parking
- Boat Ramp
- Public Area

- ### Fishing Structure
- Brush Piles
  - Rocks
  - Gravel
  - Trees Cedar
  - Rock Reefs

GPS Coordinates for the fishing structures below can be downloaded from a GPX file located at [www.iowadnr.gov/Fishing/Fishing-Maps](http://www.iowadnr.gov/Fishing/Fishing-Maps)

Depth adjusted to crest elevation  
Horizontal Datum NAD 83  
Coordinates are UTM Zone 15  
Map Produced ; February 2017



Note  
For additional information about fish population in this lake go to [www.iowadnr.gov/Fishing/Wheretofish/LakesPondsReservoirs](http://www.iowadnr.gov/Fishing/Wheretofish/LakesPondsReservoirs)  
Imery Credit: USDA NAIP