

# Nodaway Lake

## Adair County

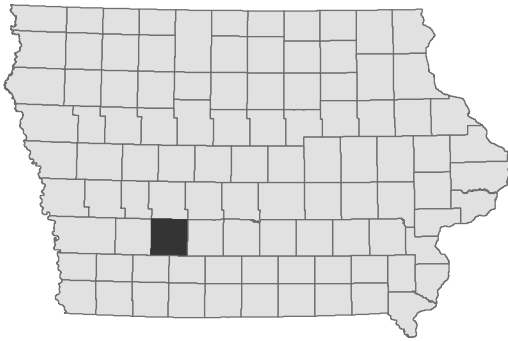
Contour Interval is three feet

Maximum Depth - 22.8 ft  
Mean Depth - 4.8 ft  
Area - 25 acres

GPS Coordinates for the fishing structures below can be downloaded from a GPX file located at [www.iowadnr.gov/Fishing/Fishing-Maps](http://www.iowadnr.gov/Fishing/Fishing-Maps)



Fisheries Bureau



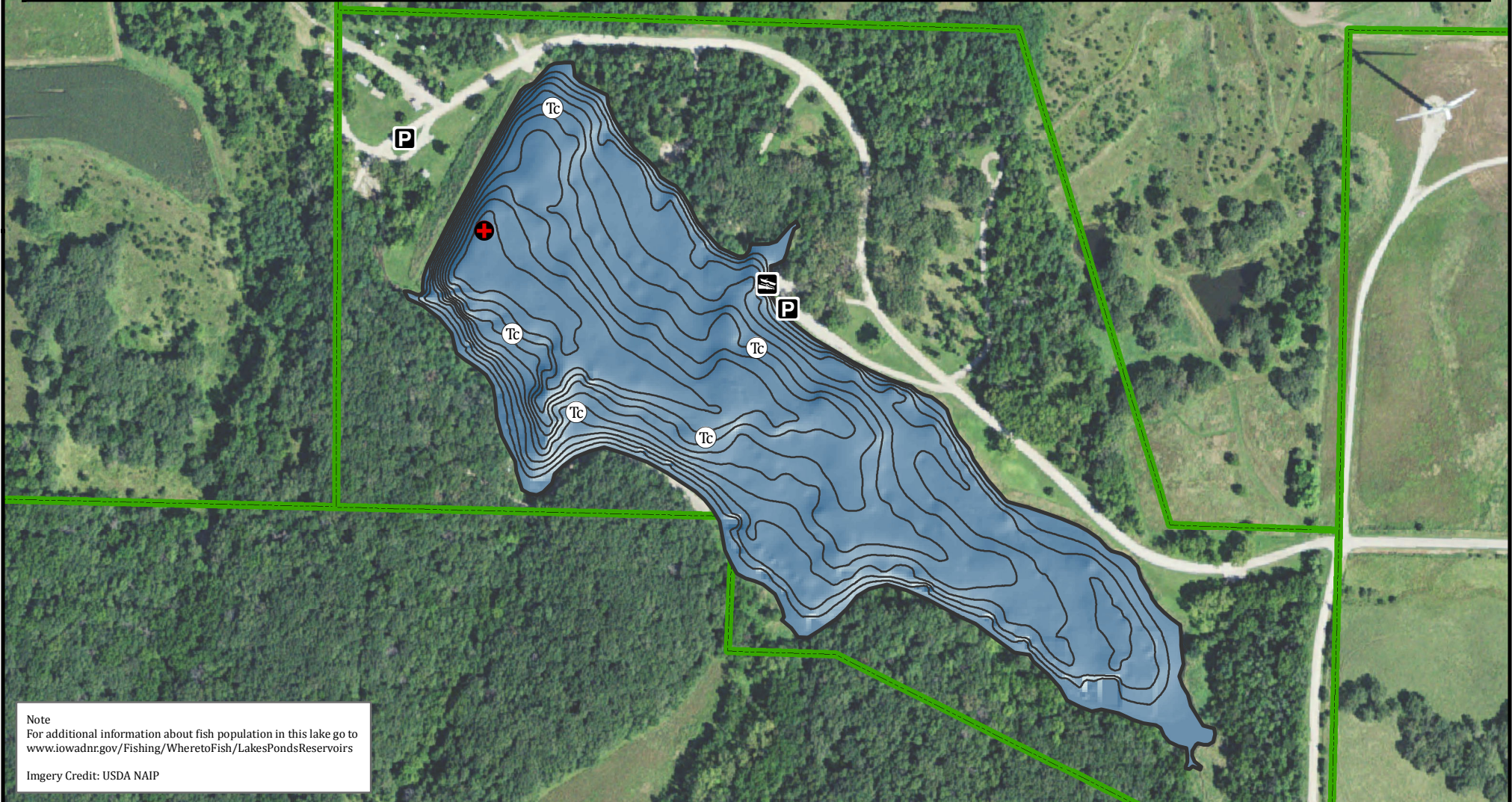
0 120 240 480 720 960 Feet

- Maximum Depth
- Parking
- Boat Ramp
- Public Area

### Fishing Structure

- Trees Cedar

Depth adjusted to crest elevation  
Horizontal Datum NAD 83  
Coordinates are UTM Zone 15  
Map Produced ; February 2017



Note  
For additional information about fish population in this lake go to [www.iowadnr.gov/Fishing/Wheretofish/LakesPondsReservoirs](http://www.iowadnr.gov/Fishing/Wheretofish/LakesPondsReservoirs)

Imagery Credit: USDA NAIP