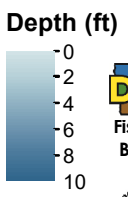


Silver Lake Dickinson County

Contour interval is one foot.



Maximum Depth - 9.4 ft
Mean Depth - 6.3 ft
Area - 1065 acres
Volume - 6725 acre-ft
Lake mapped August 2020
Depths adjusted to crest elevation
Horizontal Datum NAD 83
Coordinates are UTM Zone 15
NAIP 2017 Aerial Photography

Legend

- Max Depth
- Boat Ramp
- Parking
- DNR - Parks
- DNR - Wildlife



Trappers Bay State Park

Silver Lake Wildlife Management Area

Silver Lake Fen State Preserve

