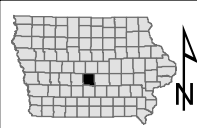


Big Creek Wildlife Management Area

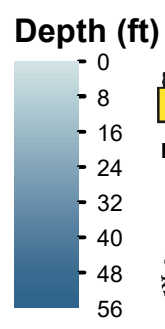
Big Creek State Park



Big Creek Lake

Polk County

Contour interval is five feet.



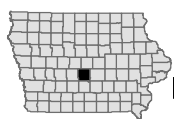
Maximum Depth - 51 ft
Mean Depth - 17.3 ft
Area - 778 acres
Volume - 13,645 acre-ft
 Lake mapped October 2019
 Depths adjusted to crest elevation
 Horizontal Datum NAD 83
 Coordinates are UTM Zone 15
 NAIP 2017 Aerial Photography

Legend	
	Max Depth
	Boat Ramp
	Army COE
	DNR - Parks
	DNR - Wildlife



Big Creek Wildlife Management Area

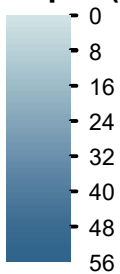
Big Creek State Park



Big Creek Lake Polk County

Contour interval is five feet.

Depth (ft)



Maximum Depth - 51 ft
Mean Depth - 17.3 ft
Area - 778 acres
Volume - 13,645 acre-ft

Lake mapped October 2019
Depths adjusted to crest elevation
Horizontal Datum NAD 83
Coordinates are UTM Zone 15
NAIP 2017 Aerial Photography

Legend

- Max Depth
- Boat Ramp
- Army COE
- DNR - Parks
- DNR - Wildlife



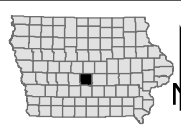


Big Creek State Park

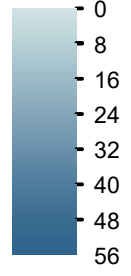
Big Creek Wildlife Management Area

Big Creek Lake Polk County

Contour interval is five feet.



Depth (ft)



Maximum Depth - 51 ft
 Mean Depth - 17.3 ft
 Area - 778 acres
 Volume - 13,645 acre-ft

Lake mapped October 2019
 Depths adjusted to crest elevation
 Horizontal Datum NAD 83
 Coordinates are UTM Zone 15
 NAIP 2017 Aerial Photography

Legend

- Max Depth
- Boat Ramp
- Army COE
- DNR - Parks
- DNR - Wildlife

