

District Forester
621 Beck St.
Charles City, IA 50616
641/228-6611

August 3, 2006

Gentlemen:

Enclosed is a "Notice of Timber for Sale" for 440 trees owned by Iowa Department of Natural Resources. The trees contain an estimated 42,060 board feet, Scribner tree scale.

The trees are located east of Highlandville, Iowa. The location of the timber is outlined on the attached aerial photo.

The trees to be sold are marked with **blue** paint. The walnut trees are numbered 1-13 and their approximate locations are marked on the map. The remaining trees are marked with a band of blue paint. The "cull" trees are marked with an "X". The trees will be sold on a lump sum, sealed bid sale. ***The successful bidder will pay the full amount in advance of cutting and within 10 days after the bid is accepted.*** The successful bidder will also enter into a timber contract with the State of Iowa within 10 days of the bid acceptance. The buyer will have **18 months** from the date of the contract to remove the trees. The ground must be dry or frozen during the logging operation. The sale does include the rights to all tops.

Logging or hauling will not be allowed during the following time period – December 1 through December 17th, which is the shotgun deer season. Also, no logging will be allowed between April 1 through July 31st.

Access to the logging areas is across David Hammel's and Kevin Locke's property. Both landowners have signed the enclosed "Timber Access Agreement" forms granting access for logging and hauling purposes. Logging and hauling must take place when the ground is firm or frozen, and the crops must be out. All wood must be removed from the fields.

After the bids are opened, the sale must be approved by the Natural Resources Commission. Approval can take 2-3 weeks. The high bidder will be notified after the bid is accepted and arrangements will be made for the signing of the contract and full payment for the trees.

Anyone working on State Land must have proof of liability insurance. Upon signing of the contract, you will be required to provide proof of insurance. The minimum coverage required to work on State Land is –

Bodily Injury - \$100,000 per person, \$300,000 per accident.
Property Damage - \$50,000 per accident, \$100,000 aggregate.

All bids must be submitted in writing and sealed in an envelope to Gary Beyer, District Forester, 621 Beck St., Charles City, Iowa 50616. The words “Timber Bid” must be written on the envelope so it isn’t opened by mistake. The bids will be opened at my office in Charles City at **1:00 p.m., Friday, September 15, 2006**. All bids must be received prior to this time. No late bids or telephone bids will be accepted.

Please feel free to contact me if you have any questions.

Respectfully,

Gary Beyer, District Forester
621 Beck St.
Charles City, IA 50616
641/228-6611

NOTICE OF TIMBER FOR SALE

NAME OF SELLER: Iowa Department of Natural Resources
Gary Beyer, District Forester

ADDRESS: 621 Beck St.
Charles City, Iowa 50616

TELEPHONE: 641/228-6611

LOCATION: Sec. 25 & 36 Highland Twsp., T100N-R7W, Winneshiek County
3 miles east of Highlandville, Iowa

TREES ARE MARKED WITH BLUE PAINT.

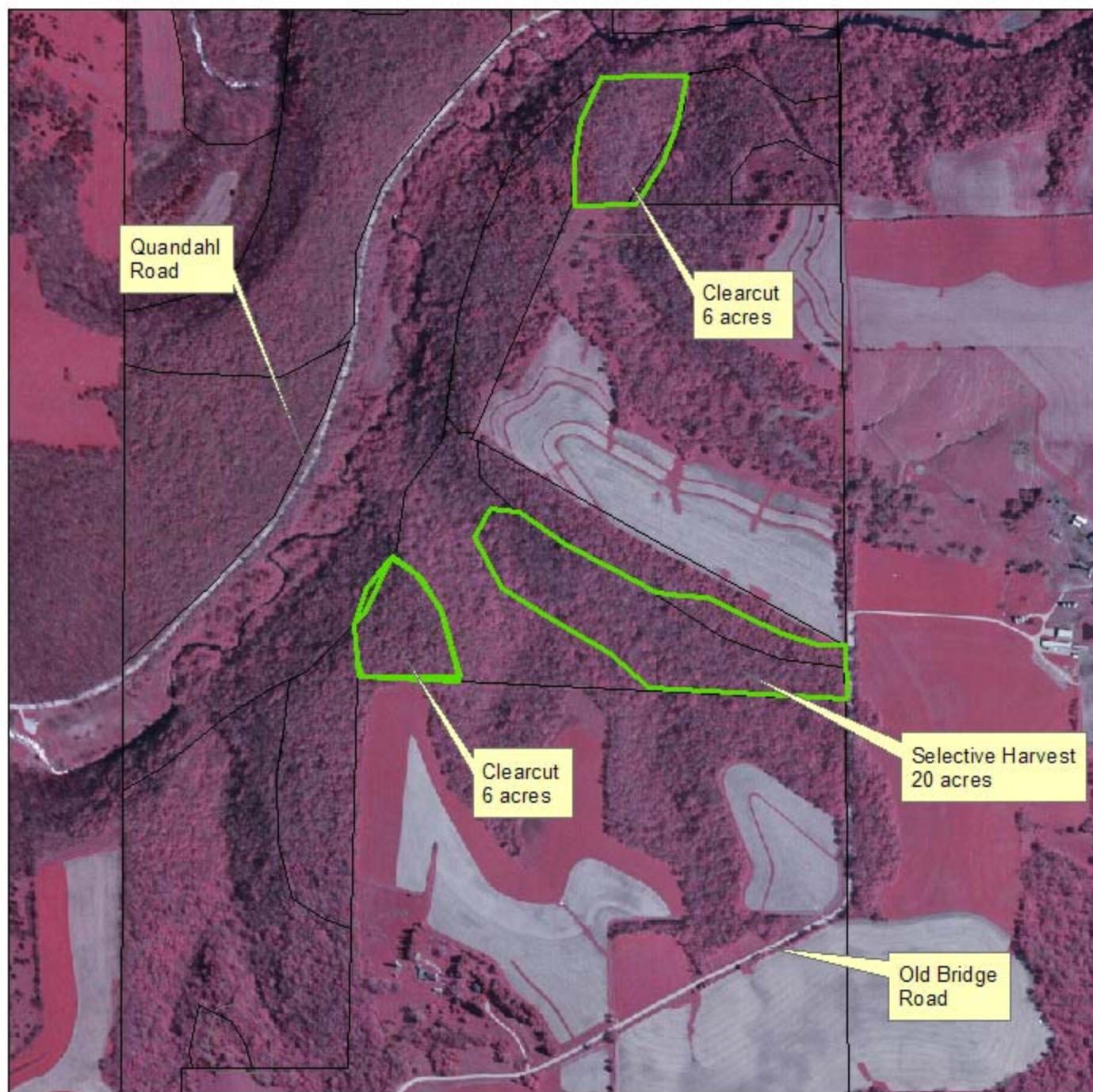
NUMBER OF TREES MARKED: 440

ESTIMATED BOARD FEET: 42,060
(Scribner Tree Scale)

SPECIES	# OF TREES	AV. BD. FT./TREE	EST. BD. FT.
Red, Black Oak	129	146	18,860
White Oak	123	112	13,750
White Elm	18	83	1,490
Red Elm	3	73	220
Basswood	22	139	3,060
Hard Maple	2	135	270
Ash	1	140	140
Black Cherry	8	99	790
Hickory	3	103	310
Birch	1	90	90
Butternut	1	70	70
Hackberry	1	70	70
Aspen	13	98	1,280
Walnut	13	123	1,660
Culls	102		
Totals	440		42,060

The volume in board feet is an estimate only and bidders/buyers should satisfy themselves by examination as to the quantity and quality of the timber offered. The seller reserves the right to reject any or all offers.

TIMBER SALE - NORTH BEAR WILDLIFE AREA
440 TREES - 42,060 BD. FT.
MARKED WITH BLUE PAINT



Sec. 25 & 36 Highland Twsp.,
T100N-R7W Winneshiek Co

0 335 670 1,340 2,010 2,680

N

