

Lake Macbride

Johnson County

Contour Interval is six feet

Maximum Depth - 45 ft
Mean Depth - 7.7 ft
Area - 940 acres



Fisheries Bureau

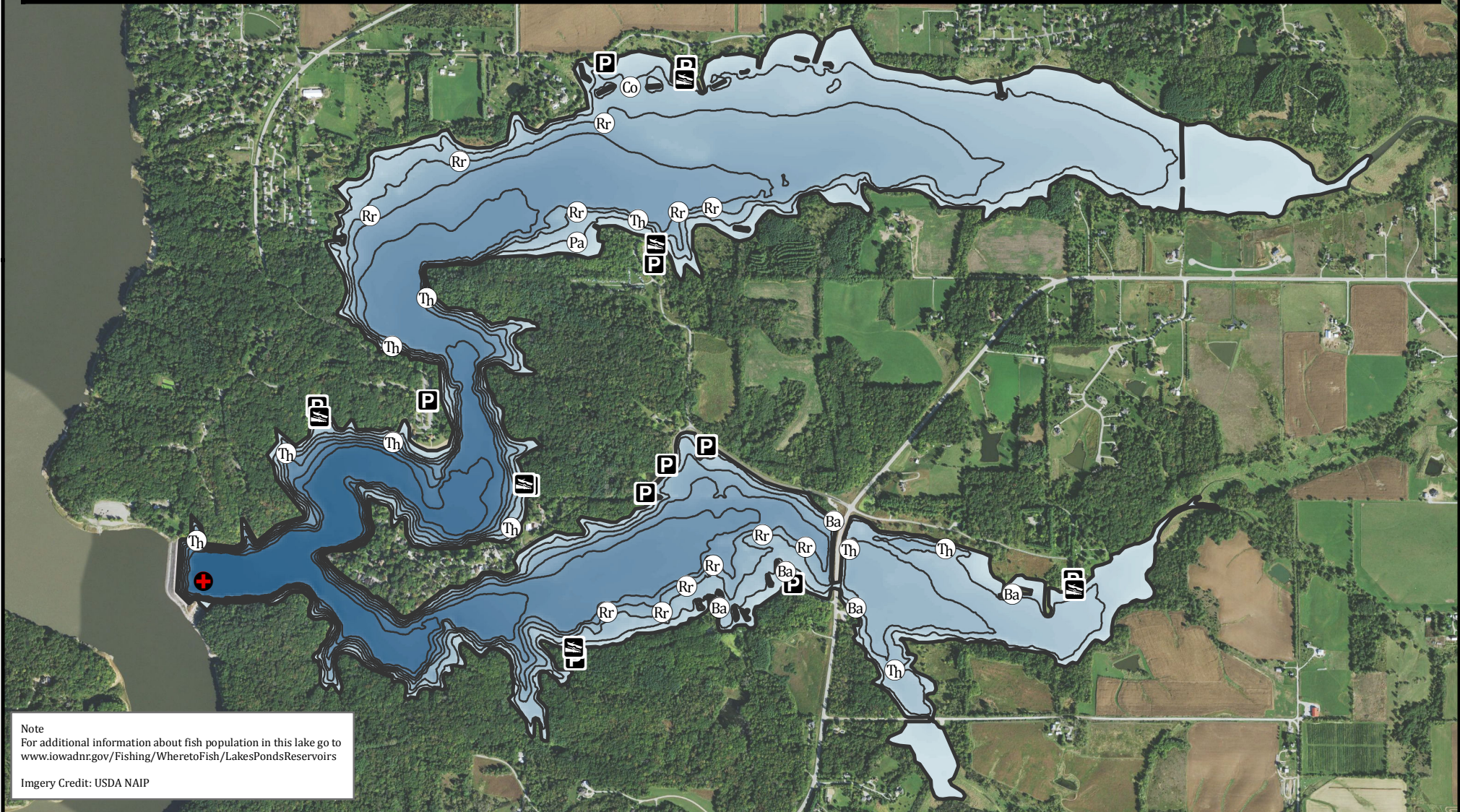


- Maximum Depth
- Parking
- Boat Ramp
- Public Area

- ### Fishing Structure
- Barrels
 - Rock Reefs
 - Concrete
 - Trees Hardwood
 - Pallets

GPS Coordinates for the fishing structures below can be downloaded from a GPX file located at www.iowadnr.gov/Fishing/Fishing-Maps

Depth adjusted to crest elevation
Horizontal Datum NAD 83
Coordinates are UTM Zone 15
Map Produced ; February 2017



Note
For additional information about fish population in this lake go to www.iowadnr.gov/Fishing/Wheretofish/LakesPondsReservoirs
Imagery Credit: USDA NAIP