

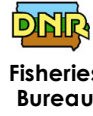
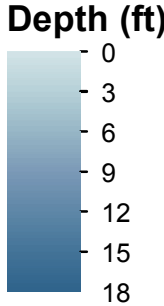
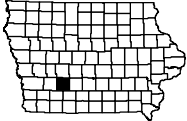
Meadow Lake WMA

Meadow Lake Adair County

Contour interval is two feet.

Maximum Depth - 17.8 ft
 Mean Depth - 6.5 ft
 Area - 37.6 acres
 Volume - 258.9 acre-ft

Lake mapped June 2015
 Depths adjusted to crest
 Horizontal Datum NAD 83
 Coordinates are UTM Zone 15
 Aerial Photography NAIP 2015



Legend	
	Max Depth
	Ramp
	Parking
	DNR Wildlife

