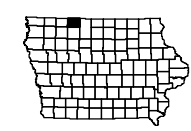
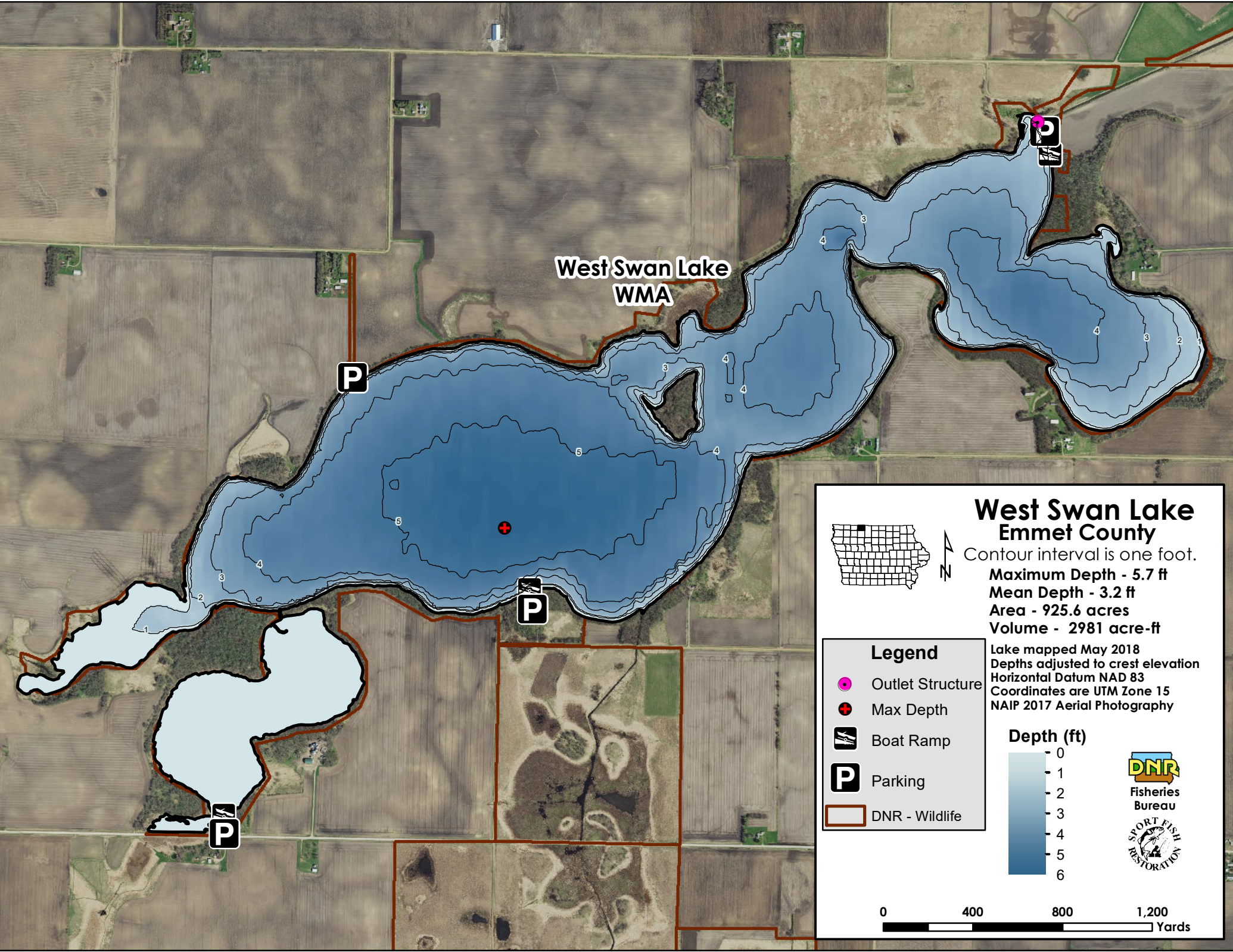


West Swan Lake WMA



West Swan Lake Emmet County

Contour interval is one foot.

Maximum Depth - 5.7 ft






Mean Depth - 3.2 ft

Area - 925.6 acres

Volume - 2981 acre-ft

Lake mapped May 2018
Depths adjusted to crest elevation
Horizontal Datum NAD 83
Coordinates are UTM Zone 15
NAIP 2017 Aerial Photography

Legend

-  Outlet Structure
-  Max Depth
-  Boat Ramp
-  Parking
-  DNR - Wildlife

Depth (ft)

