

Joy Springs & Upper Maquoketa River

Clayton County

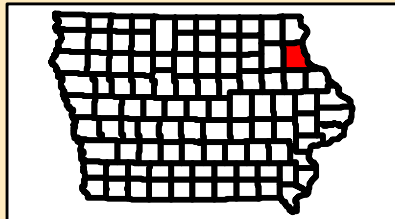
Location (Joy Springs) Lat/Lon: 42.676666 / -91.596722

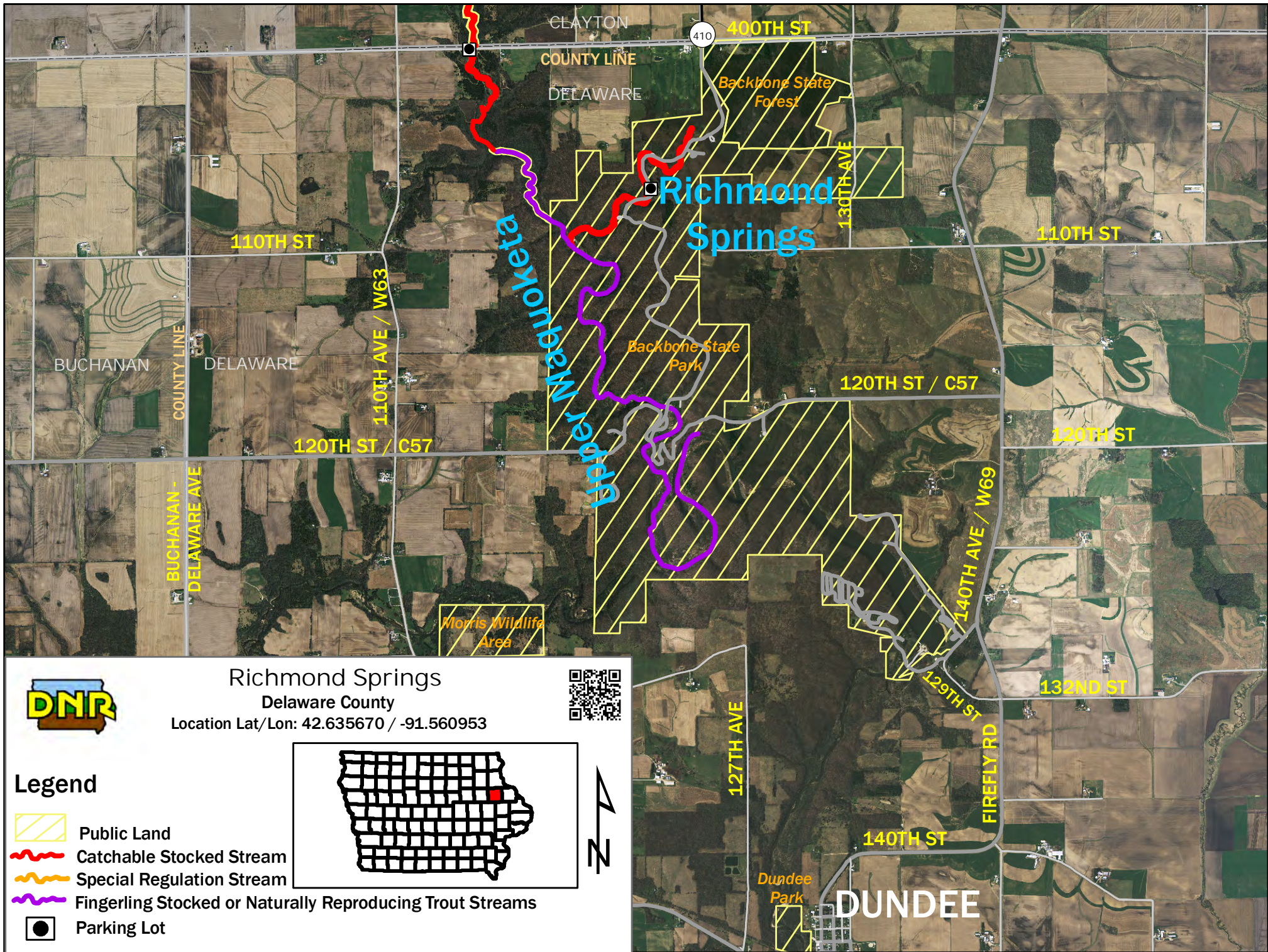
Location (Maquoketa) Lat/Lon: 42.643976 / -91.579794



Legend

- Hard Surface Roads
- Gravel Roads
- Catchable Stocked Stream
- Special Regulation Stream
- Fingerling Stocked or Naturally Reproducing Trout Streams
- Parking Lot










Richmond Springs

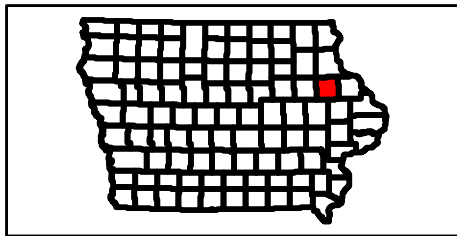
Delaware County

Location Lat/Lon: 42.635670 / -91.560953



Legend

-  Public Land
-  Catchable Stocked Stream
-  Special Regulation Stream
-  Fingerling Stocked or Naturally Reproducing Trout Streams
-  Parking Lot



DUNDEE

