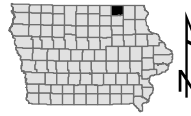
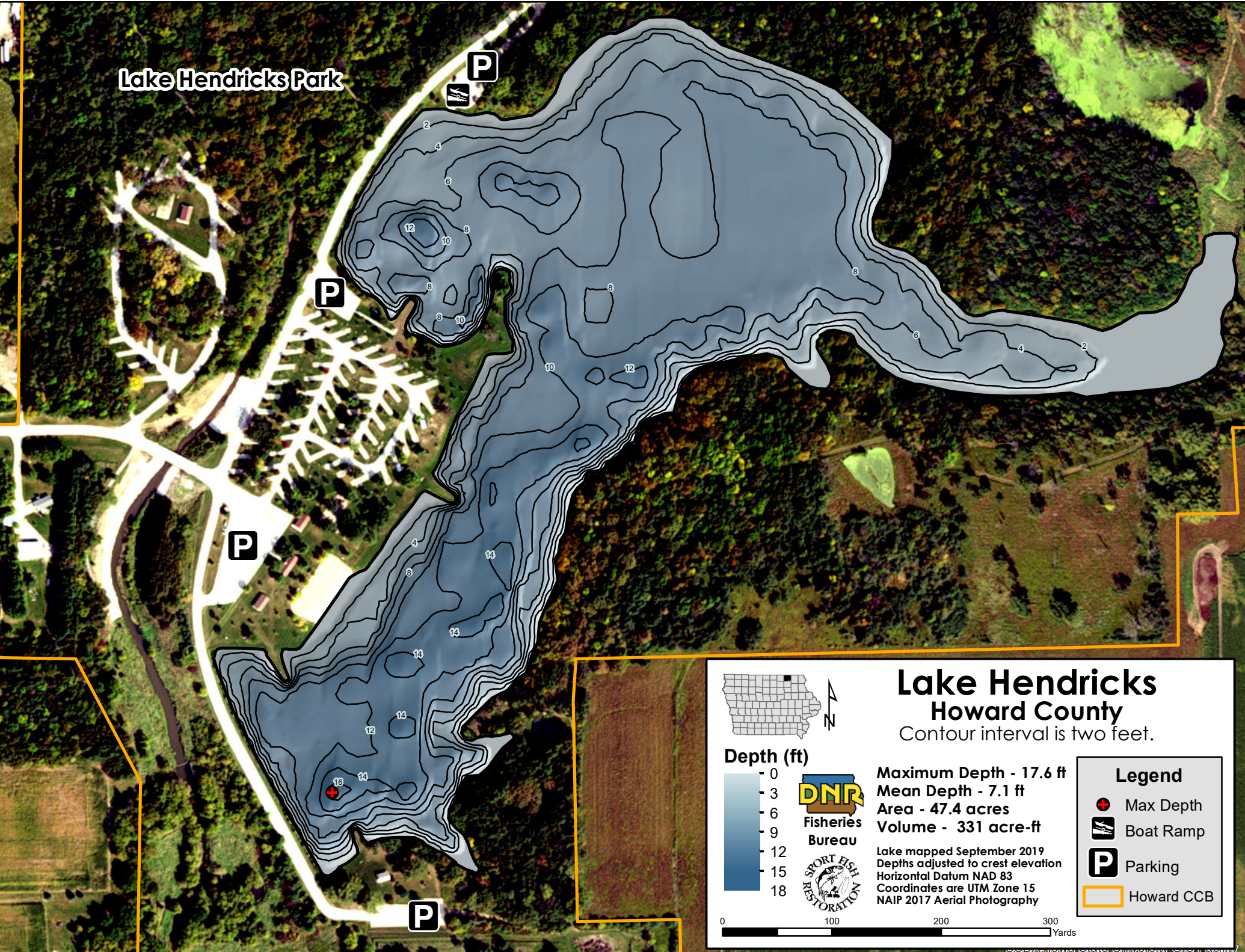


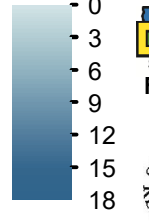
Lake Hendricks Park



Lake Hendricks Howard County

Contour interval is two feet.

Depth (ft)



Maximum Depth - 17.6 ft
 Mean Depth - 7.1 ft
 Area - 47.4 acres
 Volume - 331 acre-ft

Lake mapped September 2019
 Depths adjusted to crest elevation
 Horizontal Datum NAD 83
 Coordinates are UTM Zone 15
 NAIP 2017 Aerial Photography

Legend

- Max Depth
- Boat Ramp
- Parking
- Howard CCB

