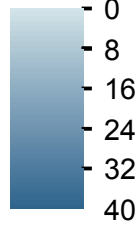


Beaver Lake Dallas County

Contour interval is three feet.



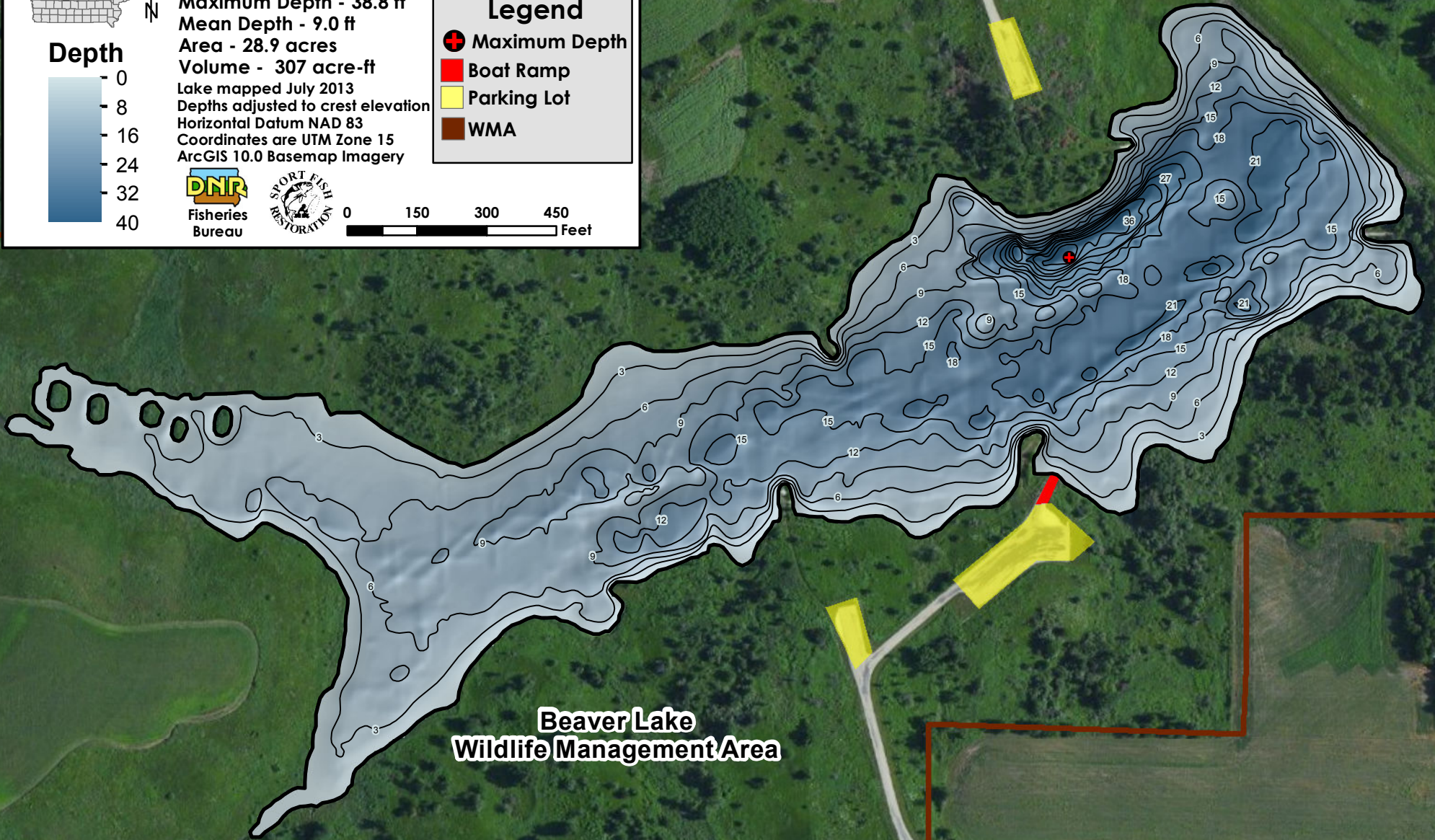
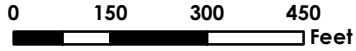
Depth



Maximum Depth - 38.8 ft
Mean Depth - 9.0 ft
Area - 28.9 acres
Volume - 307 acre-ft
Lake mapped July 2013
Depths adjusted to crest elevation
Horizontal Datum NAD 83
Coordinates are UTM Zone 15
ArcGIS 10.0 Basemap Imagery

Legend

- Maximum Depth
- Boat Ramp
- Parking Lot
- WMA



**Beaver Lake
Wildlife Management Area**