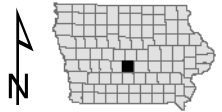


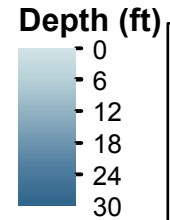
# Blue Heron Lake Polk County

Contour interval is two feet.



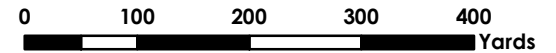
Maximum Depth - 29.3 ft  
Mean Depth - 12.3 ft  
Area - 256.8 acres  
Volume - 3160 acre-ft

Lake mapped October 2017  
Horizontal Datum NAD 83  
Depths adjusted to Crest Elevation  
Coordinates are UTM Zone 15  
Aerial Photo NAIP 2013



## Legend

- Max Depth
- Parking Lot
- Boat Ramp
- DNR Parks



No Depth Data

