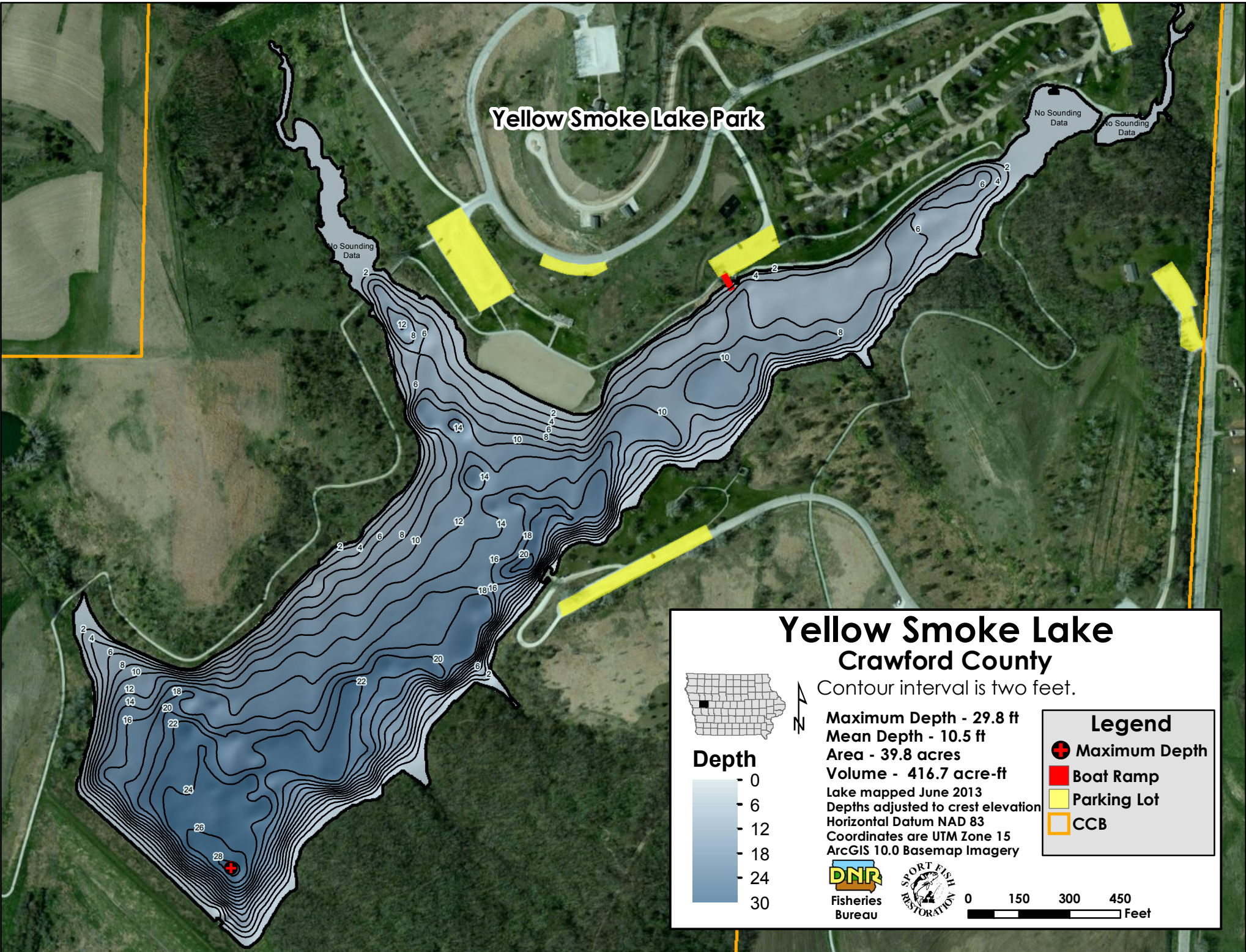
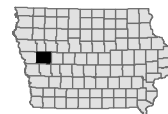


Yellow Smoke Lake Park

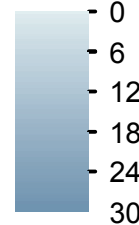


Yellow Smoke Lake Crawford County

Contour interval is two feet.



Depth



Maximum Depth - 29.8 ft
Mean Depth - 10.5 ft
Area - 39.8 acres
Volume - 416.7 acre-ft
Lake mapped June 2013
Depths adjusted to crest elevation
Horizontal Datum NAD 83
Coordinates are UTM Zone 15
ArcGIS 10.0 Basemap Imagery

Legend

- Maximum Depth
- Boat Ramp
- Parking Lot
- CCB

