

Fisheries Bureau

# Big Spirit Lake Dickinson County

Contour Interval is three feet

Maximum Depth - 22.4 ft  
Mean Depth - 9.4 ft  
Area - 5,684 acres

0 1,300 2,600 5,200 7,800 10,400 Feet

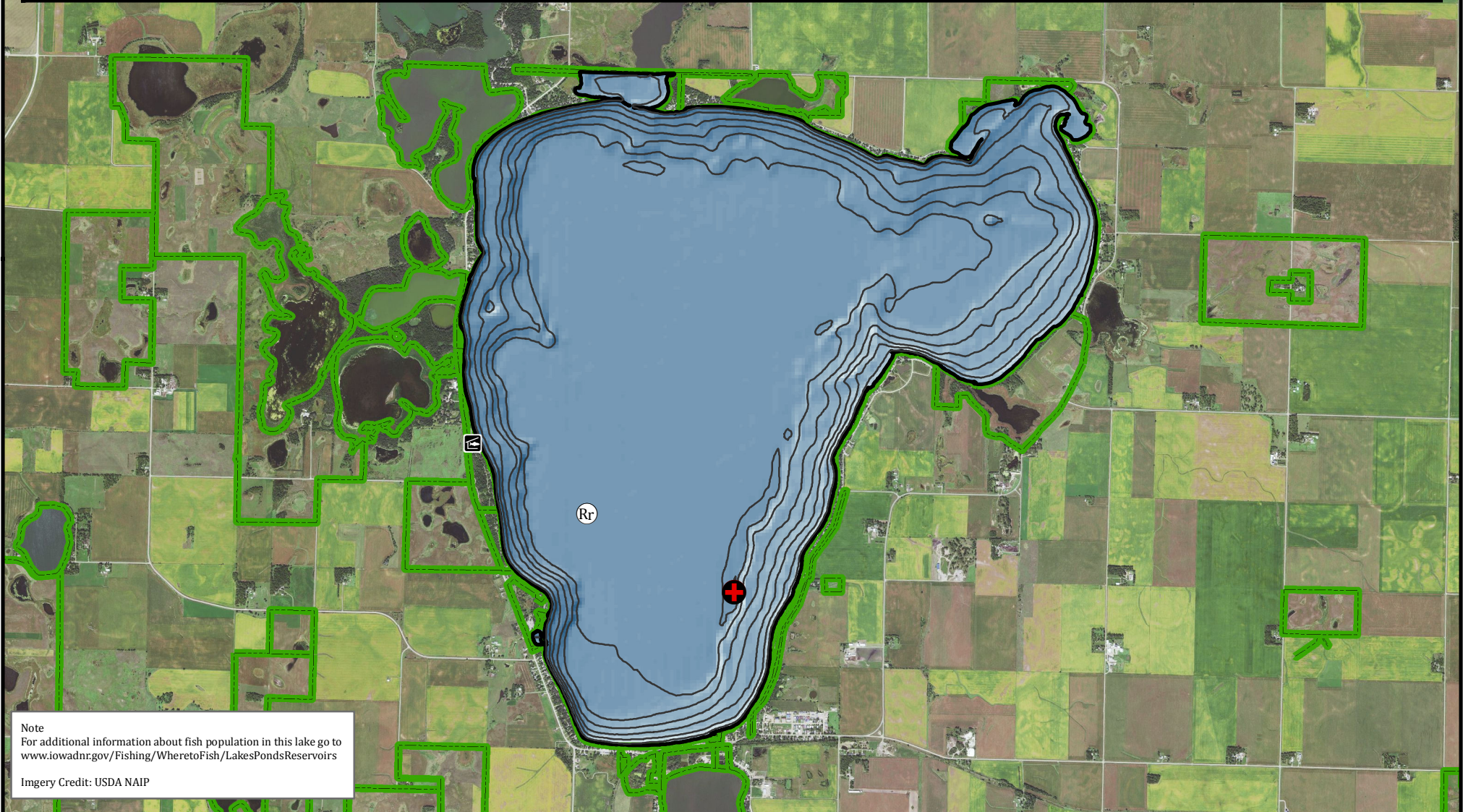
## Fishing Structures

Rock Reefs

- Maximum Depth
- Fish Cleaning Station
- Public Area

GPS Coordinates for the fishing structures below can be downloaded from a GPX file located at [www.iowadnr.gov/Fishing/Fishing-Maps](http://www.iowadnr.gov/Fishing/Fishing-Maps)

Depth adjusted to crest elevation  
Horizontal Datum NAD 83  
Coordinates are UTM Zone 15  
Map Produced ; February 2017



Note  
For additional information about fish population in this lake go to [www.iowadnr.gov/Fishing/Wheretofish/LakesPondsReservoirs](http://www.iowadnr.gov/Fishing/Wheretofish/LakesPondsReservoirs)

Imagery Credit: USDA NAIP