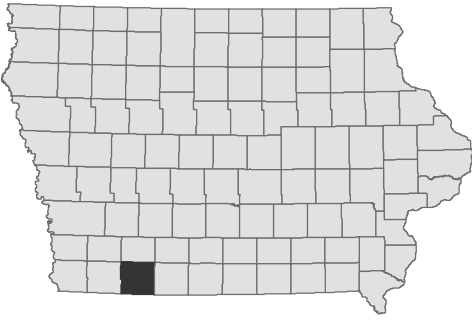


Sands Timber Lake

Taylor County



Contour Interval is two feet



Maximum Depth - 15 ft
Mean Depth - 6.8 ft
Area - 60 acres

Depth adjusted to crest elevation
Horizontal Datum NAD 83
Coordinates are UTM Zone 15
Map Produced ; February 2017



0 145 290 580 870 1,160 Feet

Maximum Depth

Parking

Boat Ramp

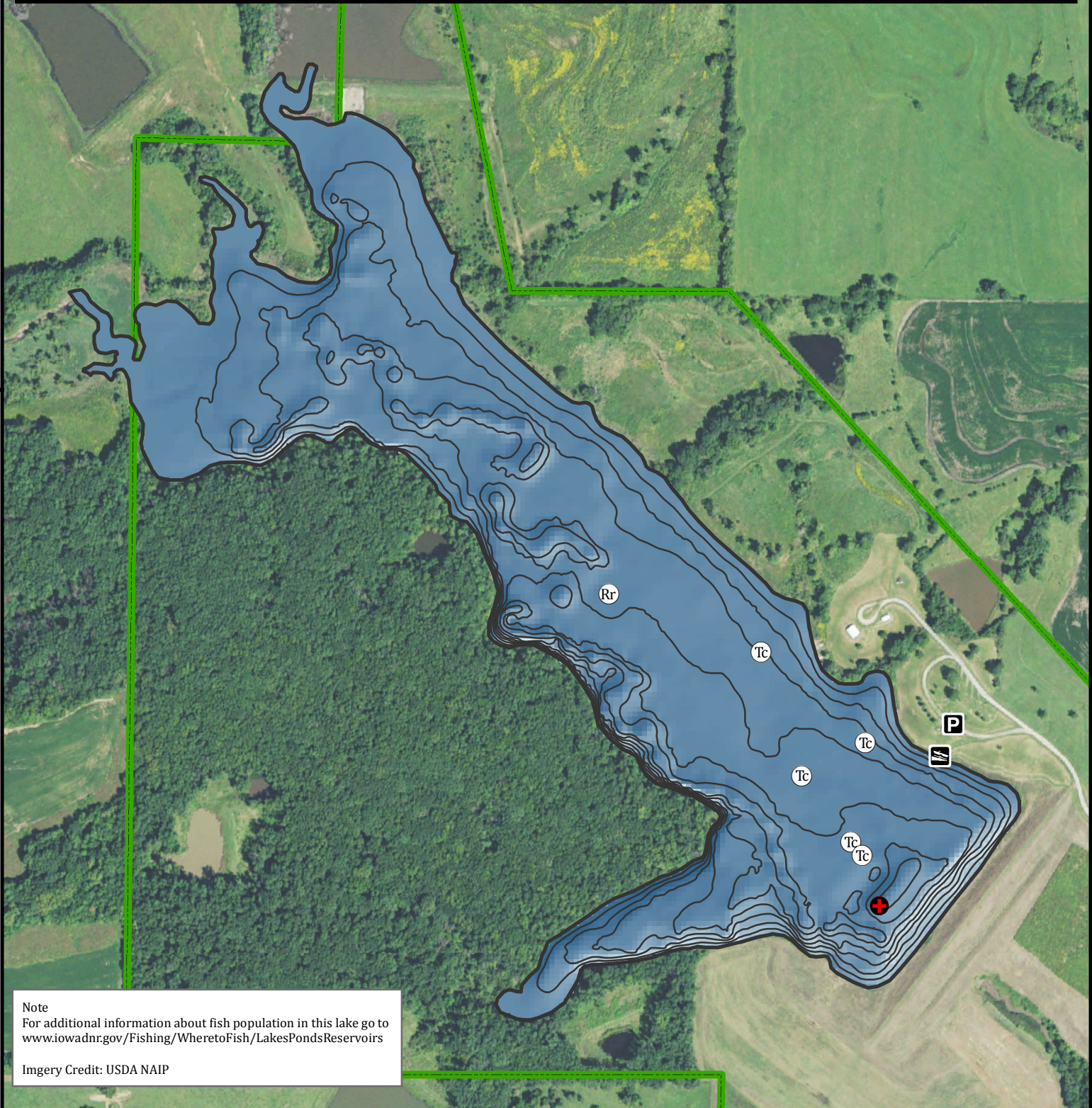
Public Area

Fishing Structure

Rock Reefs

Trees Cedar

GPS Coordinates for the fishing structures below can be downloaded from a GPX file located at www.iowadnr.gov/Fishing/Fishing-Maps



Note
For additional information about fish population in this lake go to www.iowadnr.gov/Fishing/Wheretofish/LakesPondsReservoirs

Imagery Credit: USDA NAIP